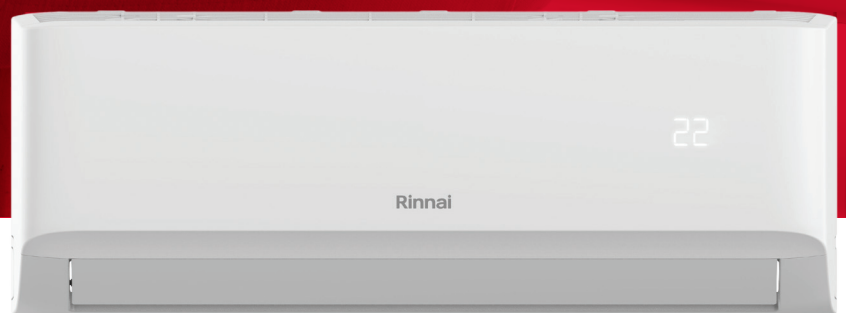


Rinnai



PB Series

Inverter Split System

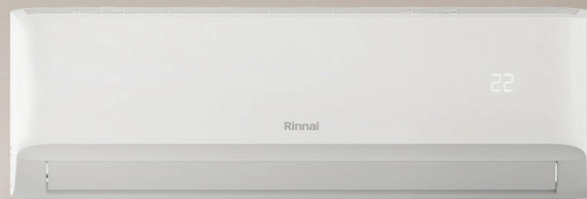


Rinnai PB Series

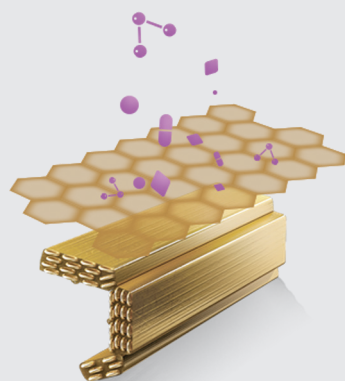
Designed for Australia's ever-changing climate, the Rinnai PB Series Inverter Split System provides both optimal heating and cooling all year round no matter where you live.

Packed with innovative features including Wi-Fi connectivity, self-cleaning function and sleep mode, the PB Series is the ultimate in providing complete comfort. This smart system can also work around your unique lifestyle with an ultra-practical timer function, allowing you to set the unit's operation times to achieve the perfect room temperature.

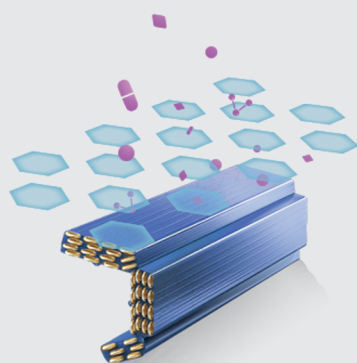
Encased in a sleek contemporary design, the Rinnai PB Series range is durable, convenient and easy to maintain.



Innovation and Design



Rinnai GoldGuard



Competitors



GoldGuard

The Rinnai PB Series Condenser Coil is coated with our special GoldGuard coating making it more resistant to oxidation and corrosion than ordinary Condenser Coils. The GoldGuard condenser coil also improves the heating efficiency of the P Series in Reverse Cycle operation by accelerating the defrosting process.

Rinnai's unique GoldGuard coating uses nano technology to effectively prevent bacteria growth and deliver greater longevity and sustained performance of the outdoor unit in coastal areas and other harsh environments. Also, the coating is non-toxic and 100% environmentally friendly.



At Rinnai, we're all about comfort

For over 50 years, Rinnai has supplied Australian homes with a range of appliances that help people lead comfortable, safe and efficient lifestyles.

Being driven to create comfort means that we really care about our products and your experience from start to finish. We're focused on developing products with the latest technology and our level of quality is second-to-none, so you can rest assured knowing Rinnai will deliver.



Comfort at the touch of a button

Wi-Fi Control

The Rinnai PB Series features Wi-Fi control via an App.

Simple to activate and easy to use, the **NetHome Plus** App can be downloaded via Google Play or the App Store on a compatible mobile device.

Once installed and registered, you can operate your appliance on the go.

A host of functions like on/off, temperature control and fan speed can be accessed through the App. Best of all, the Wi-Fi control allows you to switch on your Air Conditioner from outside the home – creating the ultimate in convenience and comfort.

We're at your service

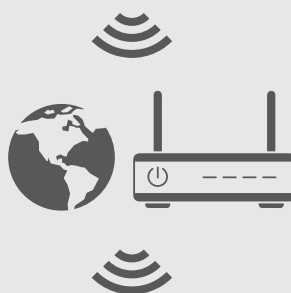
The National Customer Care Centre provides first class service and maintenance of your system, ensuring it's running at its highest efficiency - so you can enjoy the Rinnai experience for many years to come.

Operating 5 days a week
(Monday to Friday)

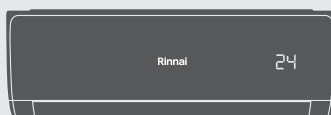
13 43 73



Turn your Air Conditioner on or off, set your temperature, fan speed and more remotely from anywhere in the world with an Internet connection.



Your home's Internet router relays requests from the App to control your Air Conditioner just like the normal remote controller.



Set your favourite temperature before you come home - enjoy the comfort and energy savings.



Available to download via:

- Google Play
- App Store



Features and Benefits



Wi-Fi Control

Set your favourite temperature from anywhere, with our intuitive Android or Apple App. Come home to ultimate comfort.



Superior Corrosion Protection

The Rinnai PB Series Condenser Coil is coated with our GoldGuard coating making it more resistant to oxidation and corrosion than ordinary Condenser Coils.



Inverter Technology

Powerful to heat and cool fast, but also smart, seamless operation to maintain consistent temperature and reduce running costs.



Quiet Operation

Designed to keep noise levels to a minimum without affecting performance, thanks to its clever design optimised to deliver better air distribution.



3D Airflow

Air blades can be controlled to swing both horizontally and vertically, allowing for balanced room temperature and comfort.



Turbo Function

Quickly cool in summer or swiftly warm in winter.



Dehumidifying Mode

Efficiently manages room humidity levels to ensure optimum comfort levels during humid summer days.



Timer

A delay ON or OFF timer allows you to select a period of time (from 30 minutes to 24 hours), the unit will turn either on or off depending on its current status.



Sleep Mode

The PB Series intelligent sleep mode operates on a two-way temperature control that modulates up and down to mimic outside ambient temperatures, ensuring a comfortable sleep.



Demand Control

Equipped with demand response capability (DRED) to help reduce overall power consumption at critical peak load times.**



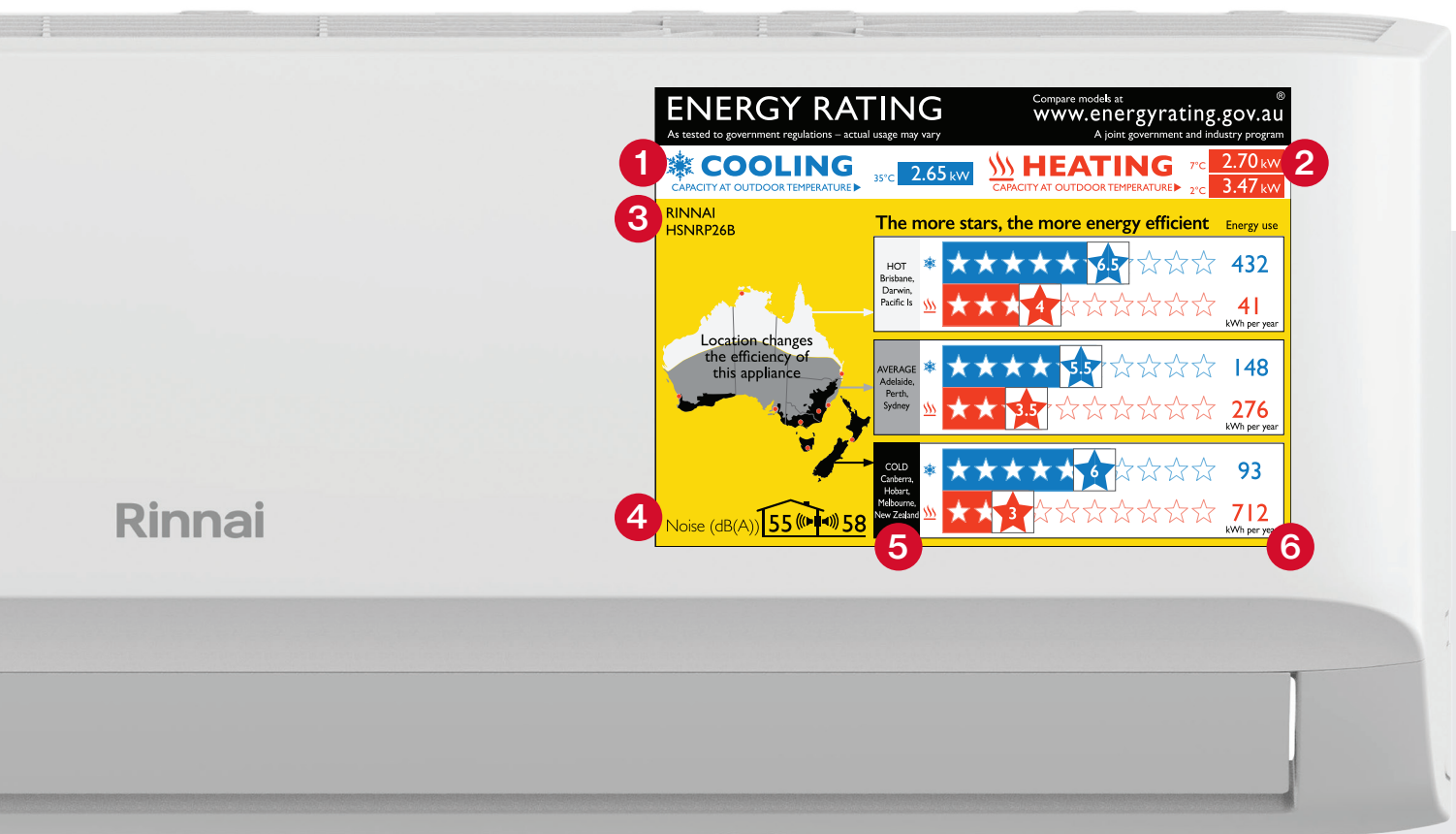
R32 Refrigerant

R32 refrigerant has lower global warming potential than traditional refrigerants. Also provides higher energy efficiency while using lower refrigerant volumes.

*For full terms & conditions visit www.rinnai.com.au

**Subject to availability from your energy provider.

Zoned Energy Rating Label



1

Cooling Capacity

The amount of cooling the Air Conditioner can provide when the outside temperature is above 35°C.

2

Heating Capacity

The amount of heating the Air Conditioner can provide when the outside temperature is 7°C and below 2°C.

3

Model Name and Number

4

Noise Levels - Sound Power

How loud the Air Conditioner will be when it is running. The number inside the house shows the inside noise levels, the number outside of the house illustrates the noise levels near the outdoor unit.

5

Efficiency Ratings Based on Locations

The efficiency of a product will change, dependent on the location in which it operates. There are three bands of ratings - Hot, Average and Cold areas in Australia and New Zealand. Use the map to determine which band to use.

6

Electricity usage

How much electricity the Air Conditioner will use each year for heating and cooling.

How to read the label

The performance of air conditioners is affected by the climate it is operating in. For this reason, new non-ducted household air conditioners must display a new Zoned Energy Rating Label that considers the climate you live in. The label provides an energy rating for three climate zones (hot, average and cold), helping you select an appliance that performs best in your location. Estimated annual energy use in kilowatt hours (kWh) is provided on the right of the label, for heating (red) and cooling (blue) in each climate zone. In addition, it has output capacity for heating at two outdoor temperatures and cooling at one outdoor temperature, as well as noise indicators at the bottom to show the volume in decibels (dB(A)) of the air conditioner.

Technical Information

| RINNAI - PB Series Hi-Wall Split System | | HSNRP26B | HSNRP35B | HSNRP50B | HSNRP60B | HSNRP70B | HSNRP80B |
|---|------------------------------------|----------------------|----------------------|----------------------|----------------------|------------------------|------------------------|
| Nominal Capacity | kW | 2.65 | 3.55 | 5.00 | 6.00 | 7.00 | 8.00 |
| Power Supply to Outdoor Unit | V - Ph - Hz | 220-240 - 1 - 50 | | | | | |
| Recommended Circuit Breaker | A | 16 | 16 | 20 | 20 | 25 | 25 |
| Connectivity | | Wi-Fi Enabled | | | | | |
| Demand Response Enabling Device | | DRED Enabled | | | | | |
| Cooling | Rated Capacity | kW | 2.65 | 3.5 | 5.0 | 6.0 | 7.8 |
| | Capacity Range | | 1.00-3.50 | 1.50-4.90 | 2.10-7.20 | 2.10-7.20 | 3.20-8.0 |
| | Rated Power Input | W | 530 | 790 | 1280 | 1750 | 1920 |
| | Rated Current (Range) | A | 2.5 | 3.8 | 5.8 | 8.0 | 10.5 |
| | AEER | W/W | 4.98 | 4.42 | 3.90 | 3.42 | 3.53 |
| | TCSPF (Hot / Mixed / Cold) | | 8.02/7.497/7.887 | 7.00/6.76/7.07 | 6.19/5.83/6.17 | 5.86/5.61/5.99 | 5.36/5.14/5.37 |
| | Star Rating (Hot / Average / Cold) | - | 6.5 / 5.5 / 6.0 STAR | 5.0 / 5.0 / 5.5 STAR | 4.5 / 4.0 / 4.5 STAR | 4.0 / 4.0 / 4.0 STAR | 3.5/3.5/3.5 |
| Heating | Rated Capacity | kW | 2.7 | 3.8 | 5.4 | 6.5 | 8.3 |
| | Capacity Range | | 1.40-4.00 | 1.80-5.10 | 2.50-7.80 | 2.50-7.80 | 2.20-8.8 |
| | Rated Power Input | W | 510 | 830 | 1340 | 1686 | 1990 |
| | Rated Current (Range) | A | 2.50 | 5.00 | 6.00 | 8.2 | 10.8 |
| | ACOP | W/W | 5.273 | 4.564 | 4.019 | 3.847 | 3.734 |
| | HSPF (Hot / Mixed / Cold) | | 5.79/5.35/4.96 | 6.23/5.22/4.50 | 4.89/4.31/3.71 | 5.31/4.29/3.52 | 4.97/4.32/3.82 |
| | Star Rating (Hot / Average / Cold) | - | 4.0 / 3.5 / 3.0 STAR | 4.5 / 3.5 / 3 STAR | 3.0 / 2.5 / 2.0 STAR | 3.5 / 2.5 / 2.0 STAR | 3.0/2.5/2.0 |
| Maximum Input Power (Cooling / Heating) | | W | 2300 | 2300 | 3600 | 3600 | 4050 |
| Maximum Input Current (Cooling / Heating) | | A | 10.5 | 10.5 | 15.5 | 15.5 | 17.5 |
| Suitable Area Coverage (up to 2.6m insulated ceiling) | | m² | 11-17 | 16-23 | 23-33 | 27-40 | 32-47 |
| Indoor Unit Model No. | | HINRP26MB | HINRP35MB | HINRP50MB | HINRP60MB | HINRP70MB | HINRP80B |
| Air Flow (Turbo / Hi / Med / Lo / Min) | L/s | 175/139/100/83/56 | 183/147/106/86/58 | 264/222/167/139/89 | 264/222/167/139/89 | 382/303/250/229/147 | 382/303/250/229/147 |
| Moisture Removal | L/h | 1.00 | 1.20 | 1.80 | 2.10 | 2.40 | 3.00 |
| Sound Pressure Level @ 1m (Turbo / Hi / Med / Lo / Min) | dB(A) | 46.4/39/32.5/30/24.5 | 46.7/39/32.5/30/24.5 | 47.1/44.5/38/34.5/28 | 47.1/44.5/38/34.5/28 | 57.645/45/39/33.5/29.5 | 57.645/45/39/33.5/29.5 |
| Air Swing Louvres | Direction | 4-way swing | | | | | |
| Dimensions | Dimension (W x H x D) | mm | 802x295x200 | 802x295x200 | 971x321x228 | 1082x337x234 | 1082x337x234 |
| | Packing (W x H x D) | | 875x375x288 | 875x375x288 | 1045x405x308 | 1155x415x318 | 1155x415x318 |
| | Net / Gross Weight | kg | 8.5/11.5 | 8.5/11.5 | 111/15.2 | 111/15.2 | 13.5/17.8 |
| Operating Range | Cooling | °C | 16 - 32 | | | | |
| | Heating | | 0 - 30 | | | | |
| Outdoor Unit Model No. | | HONRP26B | HONRP35B | HONRP50B | HONRP60B | HONRP70B | HONRP80B |
| Sound Power Level | dB(A) | 57.8 | 58.5 | 65.2 | 65.2 | 65 | 66.5 |
| Sound Pressure Level @ 1m | | 55.5 | 55.5 | 59.5 | 59.5 | 61 | 61 |
| Dimensions | Dimension (W x H x D) | mm | 805x554x330 | 805x554x330 | 890x673x342 | 890x673x342 | 890x673x342 |
| | Packing (W x H x D) | | 915x615x370 | 915x615x370 | 995x740x398 | 995x740x398 | 995x740x398 |
| | Net / Gross Weight | kg | 32.2/35.1 | 32.2/35.1 | 38.3/41.6 | 38.3/41.6 | 42.4/46.9 |
| Refrigerant | Type | | R32 | | | | |
| | Charged Volume | kg | 0.9 | 0.9 | 1.26 | 1.26 | 1.4 |
| | Pipe Size: Liquid / Gas | mm | 6.35/9.52 | 6.35/9.52 | 6.35/12.7 | 6.35/12.7 | 6.35/15.9 |
| | Maximum Pipe Length | m | 25 | 25 | 30 | 30 | 50 |
| | Chargeless Length | | 10 | 10 | 10 | 10 | 10 |
| | Extra Charge for Lengths 10m | g/m | 12 | 12 | 12 | 12 | 12 |
| | Maximum Vertical Separation | m | 10 | 10 | 20 | 20 | 25 |
| Ambient Temperature Limits | Cooling | °C | 0 - 52 | 0 - 52 | 0 - 50 | 0 - 50 | -15 - 50 |
| | Heating | | -15 - 24 | -15 - 24 | -15 - 24 | -15 - 24 | -15 - 24 |

Capacities tested in accordance with AS/NZS 3823.2, with 5m interconnecting pipe length. With our policy of continuous improvement, we reserve the right to change, or discontinue at any time, specifications or designs without notice.

Note: All images contained within this brochure are for illustrative purposes only, the colours and finishes of the products featured are as close to the respective product range as photographic lighting and printing processes allow.

Rinnai Australia Pty Ltd

ABN 74 005 138 769

100 Atlantic Drive,
Keysborough, Victoria 3173

For further information
call 1300 555 545 or visit
rinnai.com.au

TOTAL HOME COMFORT



HOT WATER



HEATING



COOLING

Rinnai